

NATIONAL OYSTER MARKET REPORT

- November 2020 -



Oysters Australia is trialling the publication of a bimonthly National Oyster Report. The intent of the report is to increase transparency, facilitating access to information. The information presented below is a summary of feedback from each jurisdiction. Thanks to the South Australian Oyster Growers Association, Oysters Tasmania & NSW Farmers Association to help collect data.

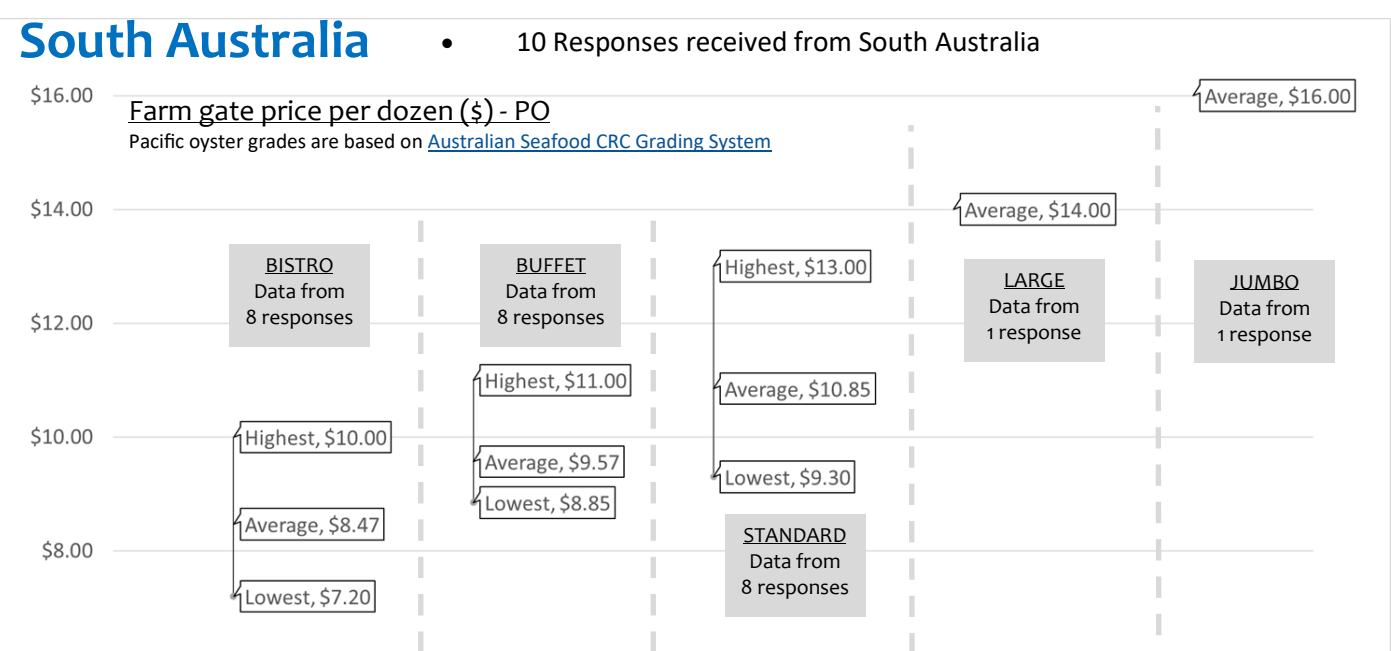
If you have any feedback, or suggested improvements on future content, please contact Andy Myers on management@oystersaustralia.org.

Comments from the supply chain — Blue Harvest:

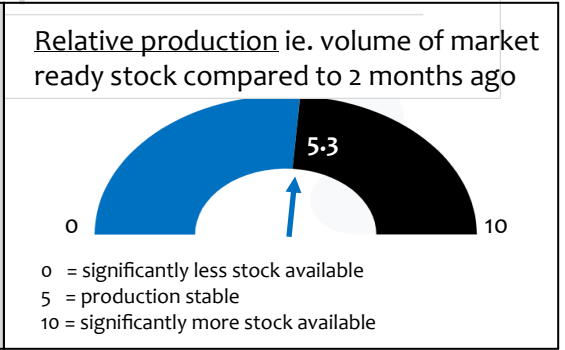
There has been further recovery in the retail market the last few months—particularly those that can deliver product directly into homes. Saying that, buyers are quite cautious with the changing situation, making it difficult to predict requirements over Christmas and into the New Year.

While there has been some recovery in food service, the demand for smaller grade oysters for seafood buffets etc. is down compared to a typical year. This has seen a shift in size preference towards the larger grades, with bistro & plate grade Sydney Rocks in particular high demand. South Australian Pacifics lost some condition in November coinciding with spawning, however product from Tasmania has been holding up nicely.

The team at Blue Harvest wishes everyone a very happy Christmas & New Year. www.blueharvest.com.au / 02 8355 4620

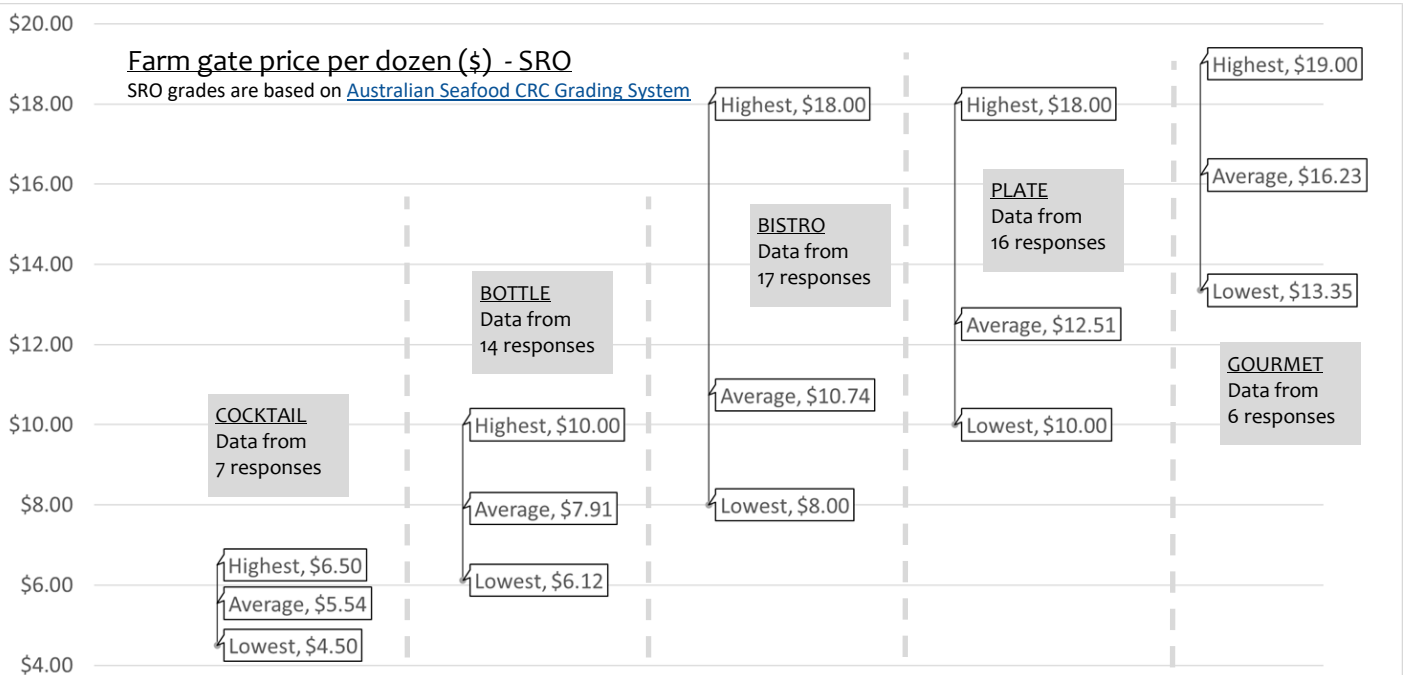



- Comments**
- Poor weather has resulted in some damage to infrastructure and has restricted farmers ability to harvest product
 - Slow growth noted
 - November has also seen a reduction in marketable stock as oysters have started to spawn



New South Wales

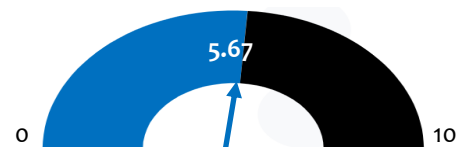
• 17 Responses received from New South Wales for SRO



Comments

- Recent rain has stimulated growth and condition, which had been slow coming on during Spring
- Running rainfall closures has hampered many estuaries from selling consistently in the lead up to Christmas
- An excellent spat catch has been reported across many areas
- Some estuaries are still reporting mortalities from fire ground run-off, and overstocking due to limited market opportunities

Relative production ie. volume of market ready stock compared to 2 months ago

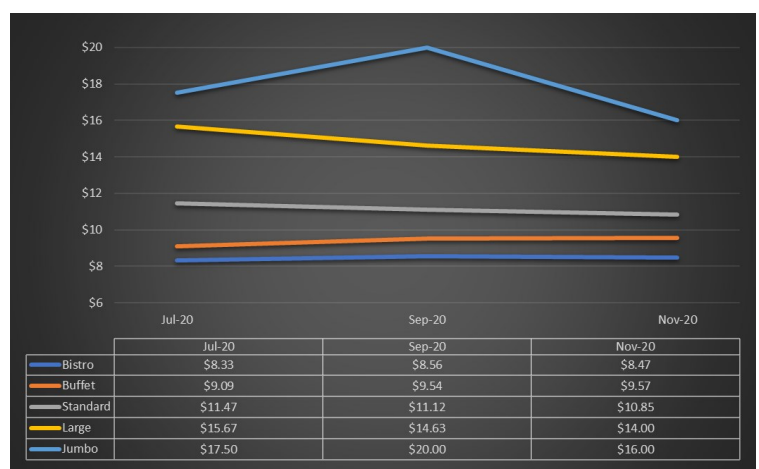
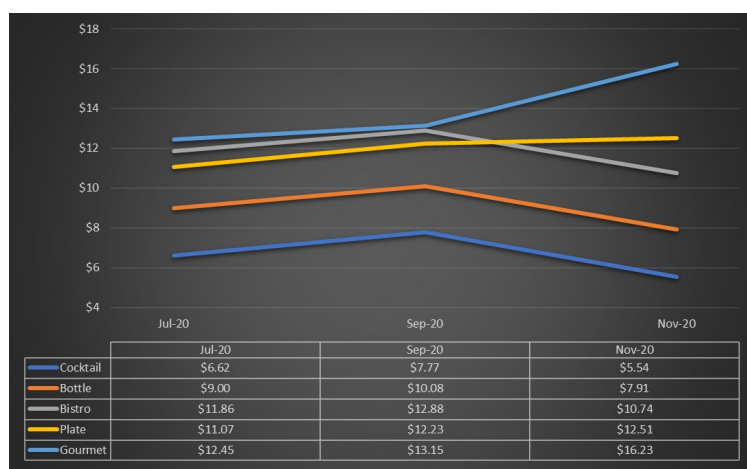


Tasmania

- Only 2 responses were received from Tasmanian growers in November.
- Unfortunately this doesn't provide enough data to enable an accurate analysis

Observations

A couple of observations from 6 months of farm gate data



NSW Data:

- Farm gate price of the larger grades has increased slightly in the lead up to Christmas. This reflects the shift in demand towards the larger grades
- Farm gate price of the smaller grades has dropped slightly in the lead up to Christmas

SA Data:

- Farm gate price has decreased slightly in the lead up to Christmas reflecting the drop in condition